

Questions & Answers

How to apply for an apartment at Colonial View:

You must complete and submit an application. HUD requires that we run a criminal, financial, and eviction background check on all individuals who apply for housing. Contact our office at 608-837-3174 for a housing application and tour.

Are there apartments for couples?

While the apartments are one-bedroom units intended for one person, couples may apply for occupancy.

How are the apartments furnished?

Apartments are attractively carpeted or vinyl. Complimentary window coverings, appliances and oak kitchen cabinets are provided. Residents bring their own furniture to furnish their apartment in a manner pleasing to them.

Is parking available for my car?

We have a surface parking lot that provides assigned spaces for Colonial View residents.

- 62 & above or mobility impaired
- Available to persons with very low or extremely low incomes
- HUD subsidized rent
- Rent based on 30% income
- Section 202/8 property

“Living Independently With Neighbors Who Care”



**601 Thomas Drive
Sun Prairie, Wisconsin 53590**

“We strive to maintain an environment where every resident feels welcome and where there is a positive atmosphere.”

Colonial View Apartments are for people who are 62 years of age and older or younger than 62 with a mobility impairment and are able to live independently.

Colonial View Apartments are far more than bricks and walls. They are home for people who enjoy their independence but are also willing to lend a hand to their neighbors.

“Providing an opportunity for older adults to live in an attractive, convenient apartment at a cost every older person can afford.”

(608) 837-3174

www.colonialviewapartments.com



Colonial View Apartments



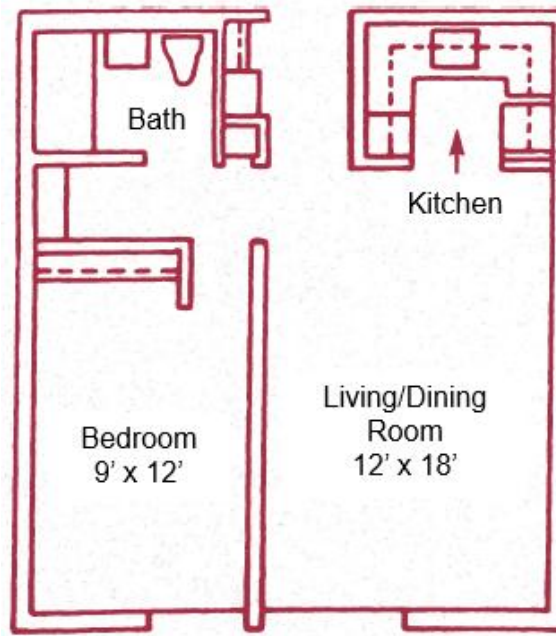
Colonial View Amenities

- Secured building with controlled access entry and security coverage
- Large dining / event room
- Community TV / Movie Lounge
- Library / Computer Room w/ WiFi
- Convenience store / Café
- Activity / Puzzle rooms
- Craft room / Multipurpose room
- Exercise room
- Beauty and barber salon
- Trash / Recycle room on each floor
- Laundry room on each floor
- Religious / spiritual services
- Screened porches on each floor
- Walk-in Jacuzzi tub for community use
- Extra wide hallways
- Landscaped outdoor courtyard
- Paved walking paths
- Two elevators
- Covered passageway to Senior Center
- Weekday meal program available at adjoined Senior Center

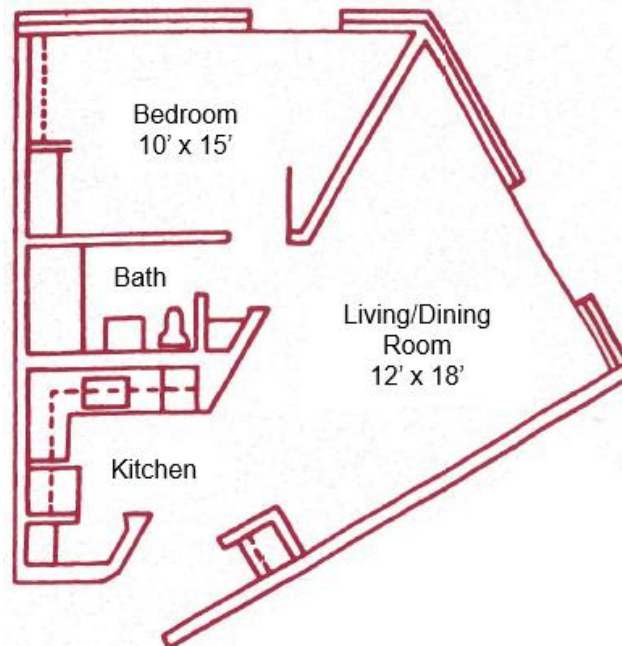
Community Amenities

- Quiet friendly neighborhood
- Large grocery store within walking distance
- Grocery Bus
- Sun Prairie Metro Bus System
- Downtown Sun Prairie within walking distance
- Walking paths and pond within the neighborhood

Regular-Shaped Floor Plan



Pie-Shaped Floor Plan



Apartment Features

Colonial View is a 3-floor building containing 92 one-bedroom units consisting of 70 regular-shaped units, 10 pie-shaped units, and 12 mobility units.

- Individually controlled thermostat for heat
- Wall-to-wall carpeting or vinyl flooring
- Window coverings
- Kitchenette with appliances
- Grab bars strategically placed in bathroom
- Walk-in shower
- Ceiling fans
- Storage closet
- One small, domesticated pet allowed

Colonial View Extras

There are many day to day needs that Colonial View provides on-site. Whether it is groceries, transportation, social activities, or just to relax and have a scoop of ice cream or cup of coffee, Colonial View has exceptional amenities for its residents.

- 24 hour on-site resident managers
- Full-time Service Coordinator
- Monthly Event Calendar
 - TV Show / Movie / Sports Nights
 - Food Events
 - Weekly Card / Board Games
 - Bi-weekly Bingo
 - Weekly Crafts
 - Coffee Clutch
 - Holiday Parties
- Quarterly Towne Meetings
- Staff sponsored appreciation / community events