



VENTIS

®

copperfield.com

NOW AVAILABLE THROUGH **COPPERFIELD!**

# The perfect match

between wood appliances and venting products

**A complete line-up of 2020-certified appliances** Stoves + Inserts + Fireplaces





NOW AVAILABLE THROUGH  
**COPPERFIELD!**







MAX

Maximum heat  
output BTU/h  
(dry cordwood)



Recommended  
heating area (ft<sup>2</sup>)



Firebox volume (ft<sup>3</sup>)



Average particulate  
emissions rate (g/h)



Maximum log  
length (in.)

Images presented in this catalog are for reference only. Some changes may have been made to the products or technical data after the publication of this brochure. Olympia Chimney reserves the right to modify their products without any obligation on its part. Any installation must be done according to the data and drawings detailed in the owner's manual.

## WOOD FIREPLACES

HE250R	4
HE275CF	6
HE325	8
HE350	10
ME150	12
ME300	14

## WOOD STOVES

HES170	16
HES240	17

## WOOD INSERTS

HEI170	18
HEI240	19

## TECHNICAL DATA 20











MAX

80,000 BTU/h

750 - 2,200 ft<sup>2</sup>2.5 ft<sup>3</sup>

1.14 g/h



20"

# HE250R

MANUFACTURER CODE VB00015

EPA  
2020

DISTINCTIVE LOUVERS



INCLUDED

- Designed mainly for heating
- Large, classic fireplace with single door
- Non-catalytic combustion technology
- Ventis distinctive louvers
- Durable C-Cast baffle
- Moulded refractory bricks
- 6" Ventis stainless steel anchor plate included
- Fresh air intake adapter included

## Required accessory

VBA1560 Black modern faceplate

## Options

- AC01223 Heat shield for shelf/mantel
- AC01275 Firescreen door
- AC01347 4"Ø fresh air intake register with airtight damper
- AC01375 Hot air gravity kit - traditional
- AC01389 Hot air gravity kit - modern with adjustable pipes
- AC09200 Carrying handles
- AC01374 Forced air kit
- AC01350 6"Ø X 25' insulated flex pipe for forced air kit



# HE275CF

MANUFACTURER CODE VB00017

EPA  
2020

HOT AIR GRAVITY KIT MODERN WITH ADJUSTABLE PIPES



HOT AIR GRAVITY KIT TRADITIONAL

- Designed mainly for heating
- Large, contemporary fireplace with single door
- Non-catalytic combustion technology
- Ventis minimalist distinctive louver
- Durable C-Cast baffle
- Moulded refractory bricks
- 6" Ventis stainless steel anchor plate included
- Fresh air intake adapter included

## Required accessories

AC01389K Hot air gravity kit – modern with adjustable pipes

AC01375K Hot air gravity kit – traditional

## Options

AC01224 Chase reduction kit

AC01275 Firescreen door

AC01347 4"Ø fresh air intake register with airtight damper

AC09200 Carrying handles

AC01363 Forced air kit

AC01350 6"Ø X 25' insulated flex pipe for forced air kit



MAX

80,000 BTU/h



750 - 2,200 ft²



2.5 ft³



1.14 g/h



20"







# HE325

MANUFACTURER CODE VB00018

EPA  
2020



DISTINCTIVE LOUVERS



INCLUDED

- Designed mainly for heating
- Large, high-efficiency fireplace among the most powerful on the market
- Retractable double doors for an unrivaled experience
- Non-catalytic combustion technology
- Ventis distinctive louvers
- Durable C-Cast baffle
- 6" Ventis stainless steel anchor plate included
- Fresh air intake adapter included

#### Required accessory

VBA1570 Black traditional faceplate

#### Options

- AC01347 4"Ø fresh air intake register with airtight damper
- AC01375 Hot air gravity kit – traditional
- AC01379 Firescreen door
- AC09200 Carrying handles
- VA4460 Forced air kit
- AC01350 6"Ø X 25' insulated flex pipe for forced air kit



MAX  
85,000 BTU/h



750 - 2,500 ft<sup>2</sup>



3.0 ft<sup>3</sup>



0.99 g/h



18"













MAX

95,000 BTU/h

1,000 - 2,800 ft<sup>2</sup>4.28 ft<sup>3</sup>

1.6 g/h



25"

# HE350

MANUFACTURER CODE VB00005

EPA  
2020

INCLUDED

- Designed mainly for heating large spaces
- Luxurious effect created by an eye-catching fireplace
- Large glass surface
- Non-catalytic combustion technology
- Durable C-Cast baffle
- 8" Ventis stainless steel anchor plate included
- Fresh air intake adapter included

#### Required accessories

VBA1540 Black traditional faceplate  
AC02360 Classic moulded refractory brick panels

#### Options

AC01349 5"Ø fresh air intake register with airtight damper  
AC01378 Warm air circulation grille - modern style  
AC09200 Carrying handles  
VA4460 Forced air kit



# ME150

MANUFACTURER CODE VB00004

This appliance is  
**EPA  
exempt**



FACTORY-INSTALLED DOORS AND FACEPLATE

- Designed mainly for ambiance
- Generates enough heat in the event of a power failure
- Premium manufacturing quality
- Moulded refractory bricks
- Firescreen doors included
- Cast iron reclining grate
- 7" Ventis stainless steel anchor plate included
- Fresh air intake adapter included

#### Options

- AC01347 4"Ø fresh air intake register with airtight damper  
VA4400 Blower with variable speed control



< 1,000 ft<sup>2</sup>



3 ft<sup>3</sup>



16"









# ME300

MANUFACTURER CODE VB00001

This model is  
**EPA QUALIFIED**  
Under the LOW MASS  
Wood-Burning Fireplace Program

**PHASE 2**  
EMISSION  
LEVEL



**INCLUDED**

- Large fireplace designed mainly for ambiance
- Generates enough heat in the event of a power failure
- Incomparable view on the flames
- Moulded refractory bricks
- Firescreen doors included
- 8" Ventis stainless steel anchor plate included
- Fresh air intake adapter included

#### Required accessory

VBA1520 Black traditional faceplate

#### Options

- AC01340 Forced air kit
- AC01347 4"Ø fresh air intake register with airtight damper
- AC01375 Hot air gravity kit – traditional
- AC01376 Hot air gravity kit – modern
- AC01350 6"Ø X 25' insulated flex pipe for forced air kit



< 1,500 ft<sup>2</sup>



4.25 ft<sup>3</sup>



20"







EPA  
2020

## HES170

MANUFACTURER CODE VB00013



- Medium size wood stove on pedestal suitable for smaller spaces
- Premium manufacturing quality
- Non-catalytic combustion technology
- Cast iron door
- Top heat deflector and side shields

**Options**

AC01000  
130 CFM blower with variable speed control (thermodisc included)

AC01299  
Rigid firescreen

AC01336  
5"Ø fresh air intake kit



# HES240

EPA  
2020

MANUFACTURER CODE VB00016

- Large wood stove on pedestal
- Premium manufacturing quality
- Non-catalytic combustion technology
- Cast iron door
- Top heat deflector and side shields

## Options

AC01000  
130 CFM blower with variable speed control (thermodisc included)

AC01315  
Rigid firescreen

AC01336  
5"Ø fresh air intake kit





EPA  
2020

## HEI170

MANUFACTURER CODE VB00014



INCLUDED

- Medium appliance suitable for smaller spaces
- Premium manufacturing quality
- Non-catalytic combustion technology
- Cast iron door

**Required accessories**

VBA1555  
Regular faceplate 29" x 44"

VBA1556  
Large faceplate 34" x 50"

**Options**

AC01298  
5"Ø fresh air intake kit

AC01299  
Rigid firescreen

AC01370  
Liner deviation adapter

AC02006  
Hook up liner system



# HEI240

EPA  
2020

MANUFACTURER CODE VB00012



INCLUDED

- Large appliance
- Premium manufacturing quality
- Non-catalytic combustion technology
- Cast iron door

## Required accessories

VBA1550  
Regular faceplate 29" x 44"

VBA1551  
Large faceplate 34" x 50"

## Options

AC01298  
5"Ø fresh air intake kit

AC01315  
Rigid firescreen

AC01370  
Liner deviation adapter

AC02006  
Hook up liner system



MAX

75,000 BTU/h



500 - 2,100 ft<sup>2</sup>



2.4 ft<sup>3</sup>



1.54 g/h



20"



# TECHNICAL DATA WOOD FIREPLACES

**ME150**  
VB00004

**ME300**  
VB00001

**HE250R**  
VB00015

## FEATURES

COLOR	Black	Black	Black
BURN TIME (ON LOW SETTING)	N/A	N/A	8 hours
COMBUSTION TECHNOLOGY	Non-catalytic	Non-catalytic	Non-catalytic
HEATING CAPACITY - BTU/h, EPA TEST LOAD	N/A	N/A	48,200
HEATING CAPACITY - BTU/h, SEASONED CORD WOOD	N/A	N/A	80,000
EMISSIONS (EPA)	N/A	2.9 g/kg	1.14 g/h
OPTIMUM EFFICIENCY	N/A	N/A	74 %
DOOR OPENING DIMENSIONS (W X H)	28 1/4" x 14 1/2"	30" x 16 1/2"	25 3/8" x 10 9/16"
FIREBOX DIMENSIONS (W X D) BEHIND ANDIRON	19 5/8" x 10 1/8"	23 1/8" x 11 3/8"	20 3/8" x 12 7/8"
GLASS VIEWING AREA (W X H)	28 3/4" x 16 1/2"	28 1/2" x 17 1/8"	24" x 10 5/8"
DOOR TYPE	Double, glass with steel frame	Double, glass with steel frame	Single, glass with cast iron frame
MAXIMUM LOG LENGTH	16"	20"	20"
LOG POSITIONING	Over width	Over width	Over width
CHIMNEY DIAMETER (INNER)	7"	8"	6"
MINIMUM CHIMNEY HEIGHT (FROM BASE OF FIREPLACE)	15'	15'	15'
GLASS TYPE	Ceramic glass	Ceramic glass	Ceramic glass
WARRANTY	Limited lifetime	Limited lifetime	Limited lifetime
TEST STANDARD - EMISSIONS/EFFICIENCY	EPA exempt	ASTM 2515 / ASTM 2558	EPA
TEST STANDARD - SAFETY	UL 127	UL 127	UL 127

## EXTERIOR DIMENSIONS AND WEIGHT

WIDTH	40 1/4"	41 1/8"	36 3/4"
DEPTH	26 1/4"	27 1/4"	28 5/8"
HEIGHT	40 5/8"	43 5/8"	40 5/8"
WEIGHT	444 lb	511 lb	495 lb

## CLEARANCES FROM UNIT TO COMBUSTIBLE MATERIALS

SIDE WALL	24"	24"	13"
BACK WALL	0"	0"	0"
SIDES	0"	0"	0"
FLOOR	0"	0"	0"
CEILING	84"	72"	80"
SHELF* (FROM BOTTOM OF FIREPLACE)	48"	48"	58"
SIDE MANTLE	6"	0"	8"
NON-COMBUSTIBLE SURROUND (TOP) FROM FACEPLATE	0"	5 1/2"	To the ceiling
NON-COMBUSTIBLE SURROUND (SIDES) FROM FACEPLATE	0"	0"	1 1/2"

\*For installation of a 6" deep shelf. For other shelf dimensions, refer to the owner's manual.



	<b>HE275CF</b> VB00017	<b>HE325</b> VB00018	<b>HE350</b> VB00005
--	---------------------------	-------------------------	-------------------------

FEATURES			
COLOR	Black	Black	Black
BURN TIME (ON LOW SETTING)	8 hours	9 hours	11 hours
COMBUSTION TECHNOLOGY	Non-catalytic	Non-catalytic	Non-catalytic
HEATING CAPACITY - BTU/h, EPA TEST LOAD	48,200	49,654	43,021
HEATING CAPACITY - BTU/h, SEASONED CORD WOOD	80,000	85,000	95,000
EMISSIONS (EPA)	1.14 g/h	0.99 g/h	1.6 g/h
OPTIMUM EFFICIENCY	74 %	72 %	69.7 %
DOOR OPENING DIMENSIONS (W X H)	25 3/8" x 10 1/2"	20 3/4" x 10 1/4"	33" x 12 3/4"
FIREBOX DIMENSIONS (W X D) BEHIND ANDIRON	20 3/4" x 12 7/8"	18 5/8" x 17"	25 3/8" x 17 7/8"
GLASS VIEWING AREA (W X H)	24" x 10 5/8"	18 3/4" x 11"	29 3/4" x 13 1/2"
DOOR TYPE	Single, glass with cast iron frame	Double, glass with cast iron frame	Double, glass with cast iron frame
MAXIMUM LOG LENGTH	20"	18"	25"
LOG POSITIONING	Over width	Over width	Over width
CHIMNEY DIAMETER (INNER)	6"	6"	8"
MINIMUM CHIMNEY HEIGHT (FROM BASE OF FIREPLACE)	15'	15'	15'
GLASS TYPE	Ceramic glass	Ceramic glass	Ceramic glass
WARRANTY	Limited lifetime	Limited lifetime	Limited lifetime
TEST STANDARD - EMISSIONS/EFFICIENCY	EPA / CSA B415.1-10	EPA / CSA B415.1-10	EPA / CSA B415.1-10
TEST STANDARD - SAFETY	ULC-S610 / UL 127	ULC-S610 / UL 127	ULC-S610 / UL 127

EXTERIOR DIMENSIONS AND WEIGHT			
WIDTH	36 3/4"	33 5/8"	45 1/4"
DEPTH	28 3/4"	29"	31 3/4"
HEIGHT	40 5/8"	49 1/8"	43 3/8"
WEIGHT	500 lb	450 lb	555 lb

CLEARANCES FROM UNIT TO COMBUSTIBLE MATERIALS			
SIDE WALL	13"	21"	24"
BACK WALL	0"	0"	0"
SIDES	0"	0"	0"
FLOOR	0"	0"	0"
CEILING	76"	84"	84"
SHELF* (FROM BOTTOM OF FIREPLACE)	48"	48" (non-combustible)	52" **
SIDE MANTLE	8"	8"	8"
NON-COMBUSTIBLE SURROUND (TOP) FROM FACEPLATE	To the ceiling	24"	To the ceiling
NON-COMBUSTIBLE SURROUND (SIDES) FROM FACEPLATE	8"	4"	3 1/16"

\*For installation of a 6" deep shelf. For other shelf dimensions, refer to the owner's manual. \*\*Non-combustible shelf only.



CHIMNEY

MANUFACTURER  
Olympia Chimney and Venting

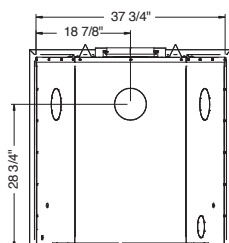
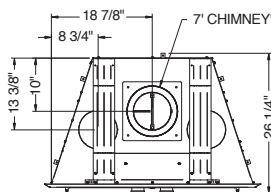
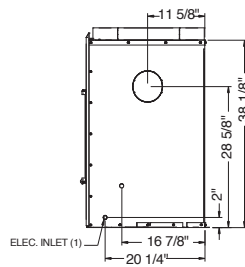
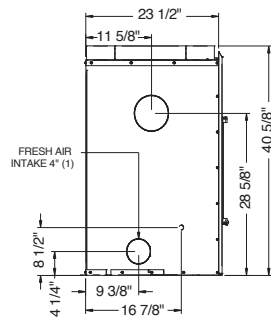
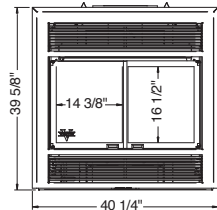
BRAND  
Ventis

TYPE  
1" Solid Pack

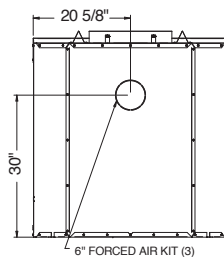
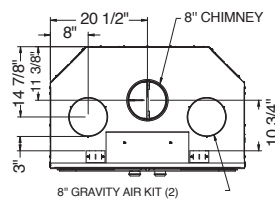
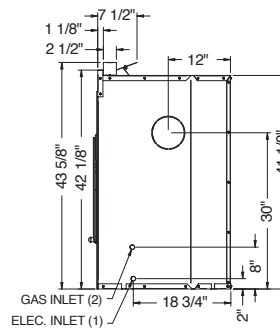
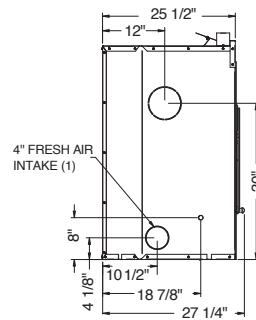
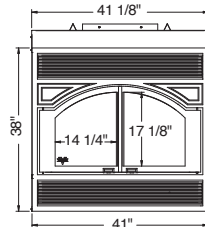


# TECHNICAL DATA WOOD FIREPLACES

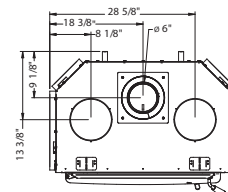
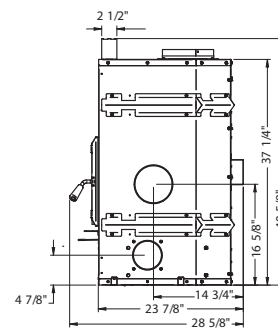
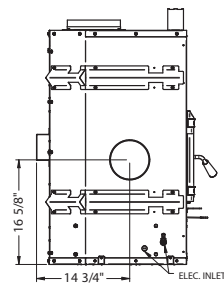
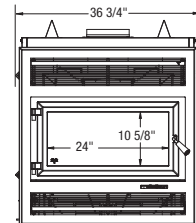
## ME150 VB00004



## ME300 VB00001



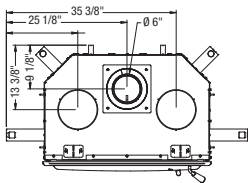
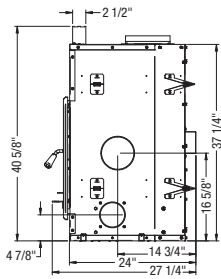
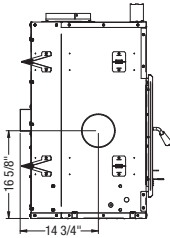
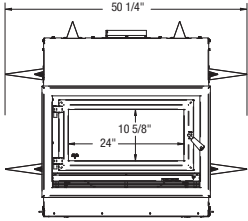
## HE250R VB00015





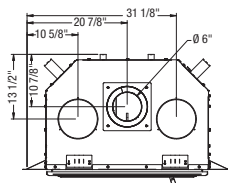
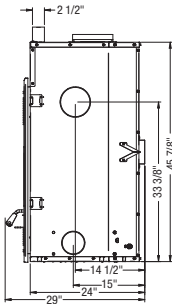
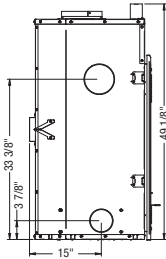
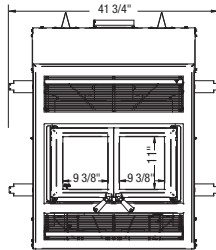
# HE275CF

VB00017



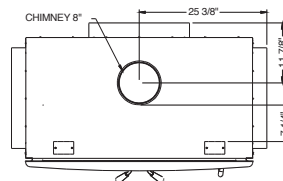
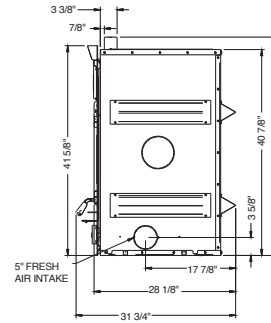
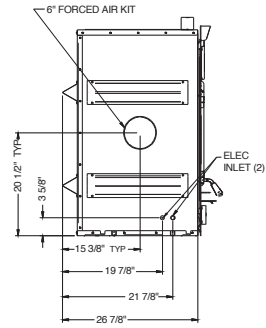
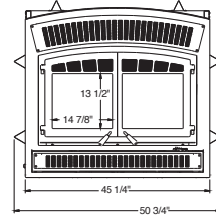
# HE325

VB00018



# HE350

VB00005





# TECHNICAL DATA WOOD STOVES

**HES170**  
VB00013

**HES240**  
VB00016

## FEATURES

COLOR	Black	Black
MAXIMUM BURN TIME <sup>1</sup>	6 hours	8 hours
COMBUSTION TECHNOLOGY	Non-catalytic	Non-catalytic
RECOMMENDED HEATING AREA <sup>1</sup>	500 - 1,800 ft <sup>2</sup>	500 - 2,100 ft <sup>2</sup>
HEATING CAPACITY - BTU/h, EPA TEST LOAD	23,300 BTU/h	28,600 BTU/h
HEATING CAPACITY - BTU/h, SEASONED CORD WOOD	65,000 BTU/h	75,000 BTU/h
AVERAGE PARTICULATE EMISSIONS RATE	1.26 g/h	1.54 g/h
OPTIMUM EFFICIENCY	78 %	77 %
DOOR OPENING DIMENSIONS (W X H)	17 1/4" x 8"	17 1/2" x 9"
FIREBOX DIMENSIONS (W X D)	19 5/8" x 13 1/2"	21" x 17 1/8"
FIREBOX VOLUME	1.9 ft <sup>3</sup>	2.4 ft <sup>3</sup>
GLASS VIEWING AREA (W X H)	15 5/8" x 9 1/4"	16 7/8" x 10 1/4"
DOOR TYPE	Single, glass with cast iron frame	Single, glass with cast iron frame
MAXIMUM LOG LENGTH	18"	20"
LOG POSITIONING	Over width	Over width
FLUE SPIGOT DIAMETER	6"	6"
GLASS TYPE	Ceramic glass	Ceramic glass
ASH DRAWER WITH SAFETY LID	Yes	Yes
MOBILE HOME APPROVED <sup>2</sup>	Yes	Yes
APPROVED FOR AN ALCOVE INSTALLATION	Yes	Yes
WARRANTY	Limited lifetime	
TEST STANDARD - EMISSIONS/EFFICIENCY	EPA / CSA B415.1-10	
TEST STANDARD - SAFETY	ULC S627, UL 1482, UL 737, NFPA 211, CSA B365 standards applicable in Canada and USA	

## EXTERIOR DIMENSIONS AND WEIGHT

WIDTH	24 7/8"	26 3/4"
DEPTH	22 3/4"	26 3/4"
HEIGHT	29 1/2"	32 1/8"
WEIGHT	340 lb	385 lb

## CLEARANCES FROM UNIT TO COMBUSTIBLE MATERIALS (FIGURES 1, 2, 3, SEE PAGE 25)

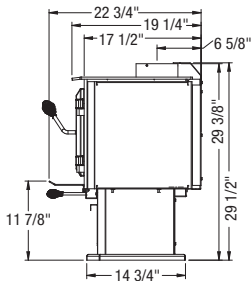
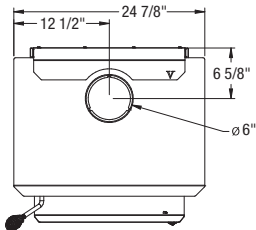
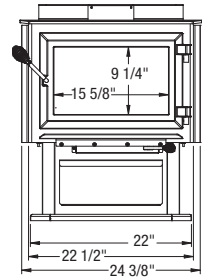
<b>WITH SINGLE WALL PIPE<sup>3</sup></b>	USA	USA
A- BACK	13"	11"
B- SIDES	10"	16"
C - CORNERS	12"	10"
D - CEILING <sup>4</sup>	84"	84"
<b>WITH DOUBLE WALL PIPE</b>	USA	USA
A- BACK	7 1/2"	6"
B- SIDES	10"	16"
C - CORNERS	12"	7"
D - CEILING <sup>4</sup>	84"	84"
<b>MINIMUM FLOOR PROTECTION IN FRONT OF UNIT</b>	16"	16"

**1)** Recommended heating area and maximum burn time may vary subject to location in home, chimney draft, heat loss factors, climate, fuel type and other variables. The recommended heated area for a given appliance is defined by the manufacturer as its capacity to maintain a minimum acceptable temperature in the designated area in case of a power failure. **2)** Fresh air intake kit required. **3)** Consult local code for minimum clearances of the single wall pipe itself to combustible materials. See also the venting manufacturer's instructions. **4)** Measured from the base of the appliance. Some appliances have been tested with a low ceiling. Before setting up your unit, refer to the installation manual.



TECHNICAL DATA WOOD STOVES

HES170  
VB00013



HES240  
VB00016

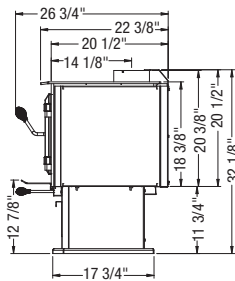
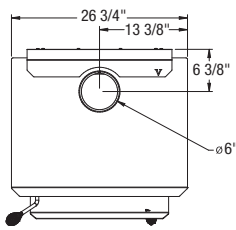
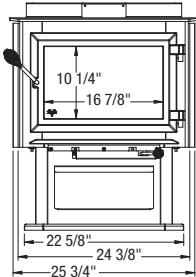


Figure 1

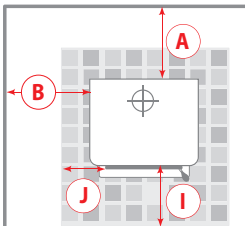


Figure 2

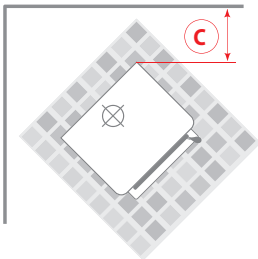
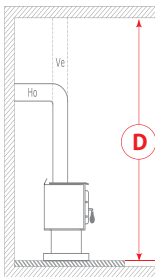


Figure 3



FLOOR PROTECTOR<sup>†</sup>

	USA
I	16" From door opening
J	8" From door opening

<sup>†</sup> Steel with a minimum thickness of 0.015" (0.38 mm) or ceramic tiles sealed together with grout. No protection is required if the unit is installed on a non-combustible floor (ex: concrete).  
<sup>‡</sup> The floor protection at the back of the stove is limited to the stove's required clearance if such clearance is smaller than 8 inches (203 mm).  
Technical data contained in this brochure are for reference only. Any installation must be done according to the data and drawings detailed in the owner's manual.



**HEI170**  
VB00014**HEI240**  
VB00012**FEATURES**

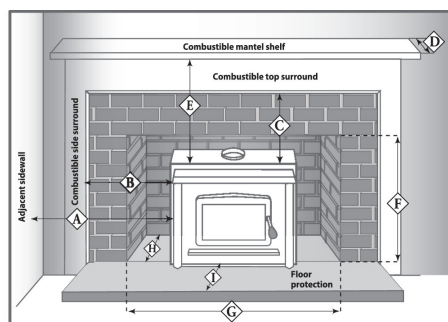
COLOR	Black	Black
MAXIMUM BURN TIME <sup>1</sup>	6 hours	8 hours
COMBUSTION TECHNOLOGY	Non-catalytic	Non-catalytic
RECOMMENDED HEATING AREA <sup>1</sup>	500 - 1,800 ft <sup>2</sup>	500 - 2,100 ft <sup>2</sup>
HEATING CAPACITY - BTU/h, EPA TEST LOAD	23,300 BTU/h	28,600 BTU/h
HEATING CAPACITY - BTU/h, SEASONED CORD WOOD	65,000 BTU/h	75,000 BTU/h
AVERAGE PARTICULATE EMISSIONS RATE	1.26 g/h	1.54 g/h
OPTIMUM EFFICIENCY	78 %	77 %
DOOR OPENING DIMENSIONS (W X H)	17 1/4" x 8 3/4"	17 1/2" x 9"
FIREBOX DIMENSIONS (W X D)	19 5/8" x 13 1/2"	21" x 16 3/4"
FIREBOX VOLUME	1.9 ft <sup>3</sup>	2.4 ft <sup>3</sup>
GLASS VIEWING AREA (W X H)	15 5/8" x 9 1/4"	16 7/8" x 10 1/4"
DOOR TYPE	Single, glass with cast iron frame	Single, glass with cast iron frame
MAXIMUM LOG LENGTH	18"	20"
LOG POSITIONING	Over width	Over width
FLUE SPIGOT DIAMETER	6"	6"
GLASS TYPE	Ceramic glass	Ceramic glass
WARRANTY	Limited lifetime	
TEST STANDARD - EMISSIONS/EFFICIENCY	EPA / CSA B415.1-10	
TEST STANDARD - SAFETY	ULC S628, UL 1482, UL 737, NFPA 211, CSA B365 standards applicable in Canada and USA	

**EXTERIOR DIMENSIONS AND WEIGHT**

WIDTH (WITHOUT FACEPLATE)	27 1/8"	28 1/2"
DEPTH	22 3/8"	26 3/4"
HEIGHT (WITHOUT FACEPLATE)	21"	22 7/8"
WEIGHT	361 lb	407 lb

**CLEARANCES FROM UNIT TO COMBUSTIBLE MATERIALS (FIGURE 1)**

A- ADJACENT SIDEWALL	16"	16"
B- COMBUSTIBLE SIDE SURROUND	9"	9"
C - COMBUSTIBLE TOP SURROUND	27"	27"
D - COMBUSTIBLE MANTLE SHELF DIMENSION (MAX)	12"	12"
E - MINIMUM CLEARANCE FROM A COMBUSTIBLE MANTLE SHELF	27"	27"
F, G, H - MINIMUM FIREPLACE OPENING WITH BLOWER (H X W X D)	21 1/2" x 27 1/2" x 12 3/4"	23 3/8" x 28 7/8" x 15 3/4"
I - MINIMUM FLOOR PROTECTION IN FRONT OF UNIT (USA)	16"	16"

**Figure 1**

 From door opening

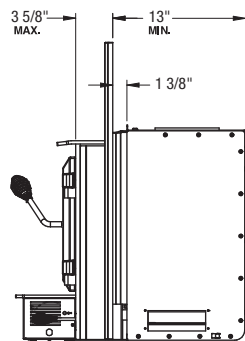
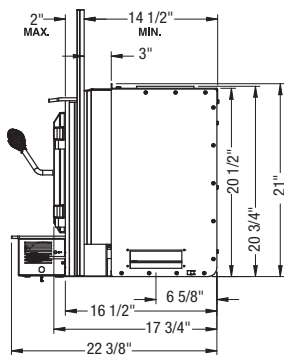
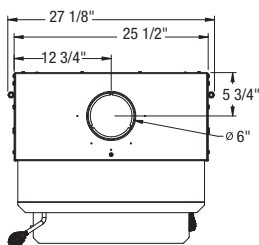
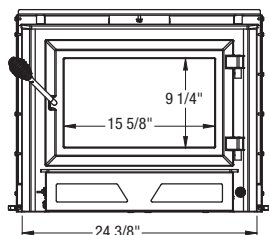
<sup>1</sup>) Recommended heating area and maximum burn time may vary subject to location in home, chimney draft, heat loss factors, climate, fuel type and other variables. The recommended heated area for a given appliance is defined by the manufacturer as its capacity to maintain a minimum acceptable temperature considering the configuration of the space or the presence of an air distribution system have a significant impact on the optimal distribution of heat.



# TECHNICAL DATA WOOD INSERTS

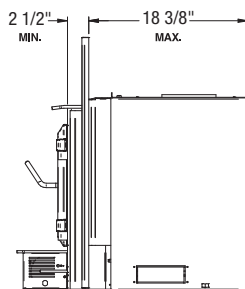
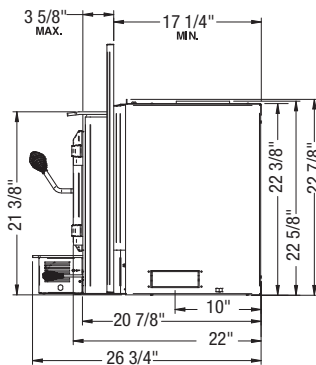
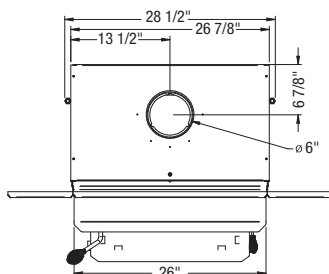
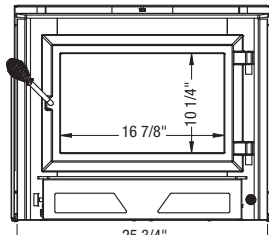
## HEI170

VB00014



## HEI240

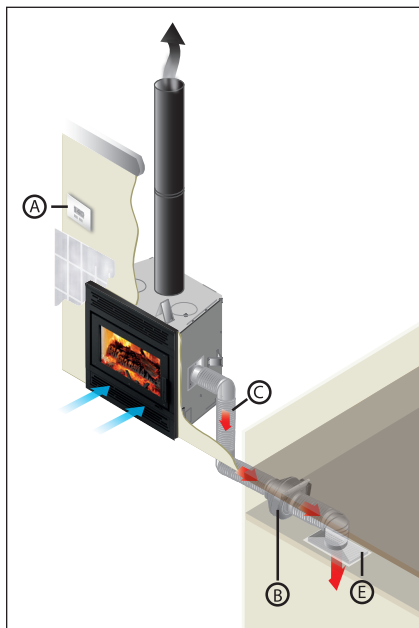
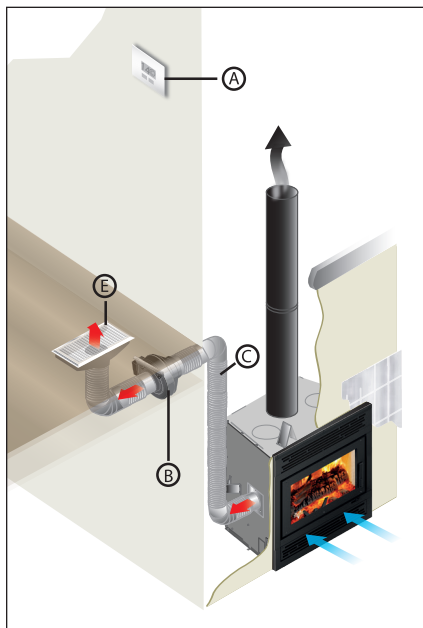
VB00012





EPA certified wood fireplaces generate a lot of heat. For the most part, they generate too much for the room where they are located. The heat distribution systems designed by Ventis allows you to redirect this heat to other areas in your home.

## FORCED AIR KIT

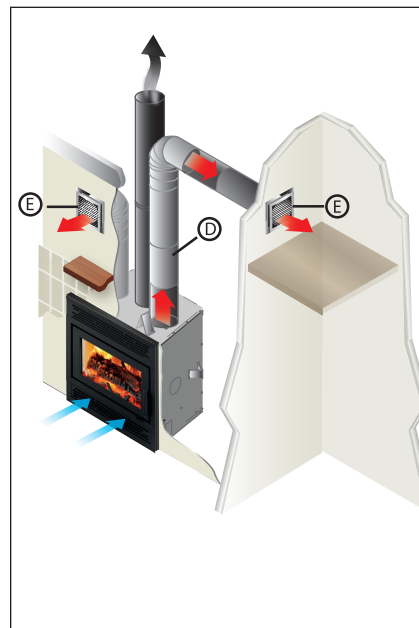


**This system allows you to manage the heat distribution automatically.**

Using a wall thermostat, you can select the temperature you want to maintain in the room where the fireplace is located. Once the thermostat is satisfied, the excess heat is redirected to another room up to 50 feet (15 m) away from the fireplace using a 300 CFM blower.

The system can also be used to supplement heat in a room remote from the fireplace. For this type of application, the thermostat needs to be positioned in the desired room and programmed with the temperature to be maintained. The system, now in "heat mode", will activate the blower as long as the temperature in the remote room is not achieved and that the fireplace has enough heat to distribute.

## HOT AIR GRAVITY KIT



**Ventis also offers you another way to circulate excess heat into your home with the help of a hot air gravity kit.**

The hot air gravity kit allows you to bring hot air into the same room as the fireplace, in adjacent rooms, or up-stairs at a maximum distance of 10' (3 m).

(Not available for HE350).

Suggested installation: A) Wall thermostat B) 300 CFM blower C) Hot air flexible pipe D) Hot air rigid pipe E) Air register.

The information contained in this page is for reference purposes only. For more details about the installation requirements of the kits and their content, please refer to the owner's manuals. For more details about the installation requirements of the forced air kit or the hot air gravity kit, visit : <http://www.occanada.com/en/service-support/heat-distribution-system>

# HOW TO DIFFERENTIATE EACH **TYPE OF FIREPLACE**

**EPA  
2020**

Our EPA-certified wood fireplaces (HE250R, HE275CF, HE325 and HE350) have been tested and obtained emissions lower than the limit imposed by the EPA 2020 standard for wood heating appliances. Emissions are reported in grams per hour. As with an EPA certified wood stove, you will benefit from high efficiency combustion, in addition to being able to use your fireplace in slow combustion mode overnight. Indeed, a control makes it possible to adjust the air supply to the fire, which allows you to obtain the burn rate that suits you.

This model is  
**EPA QUALIFIED**  
Under the LOW MASS  
Wood-Burning Fireplace Program

**PHASE 2**  
EMISSION  
LEVEL

EPA-qualified wood fireplaces (ME300) have been tested for particulate emissions. This time, the results were below the limit proposed by Phase II of the voluntary program for wood-burning fireplaces implemented by the US EPA. Emissions are calculated in grams of particles emitted per kilogram of wood burned. Qualified fireplaces are used in the same way as conventional wood-burning fireplaces. However, these fireplaces are generally better insulated and more efficient than conventional ambiance fireplaces. They produce beautiful heat and allow you to have an exceptional view of the flames. They can be operated with the doors open or closed. However, having no control to adjust the burn rate, these fireplaces are not designed to burn overnight.

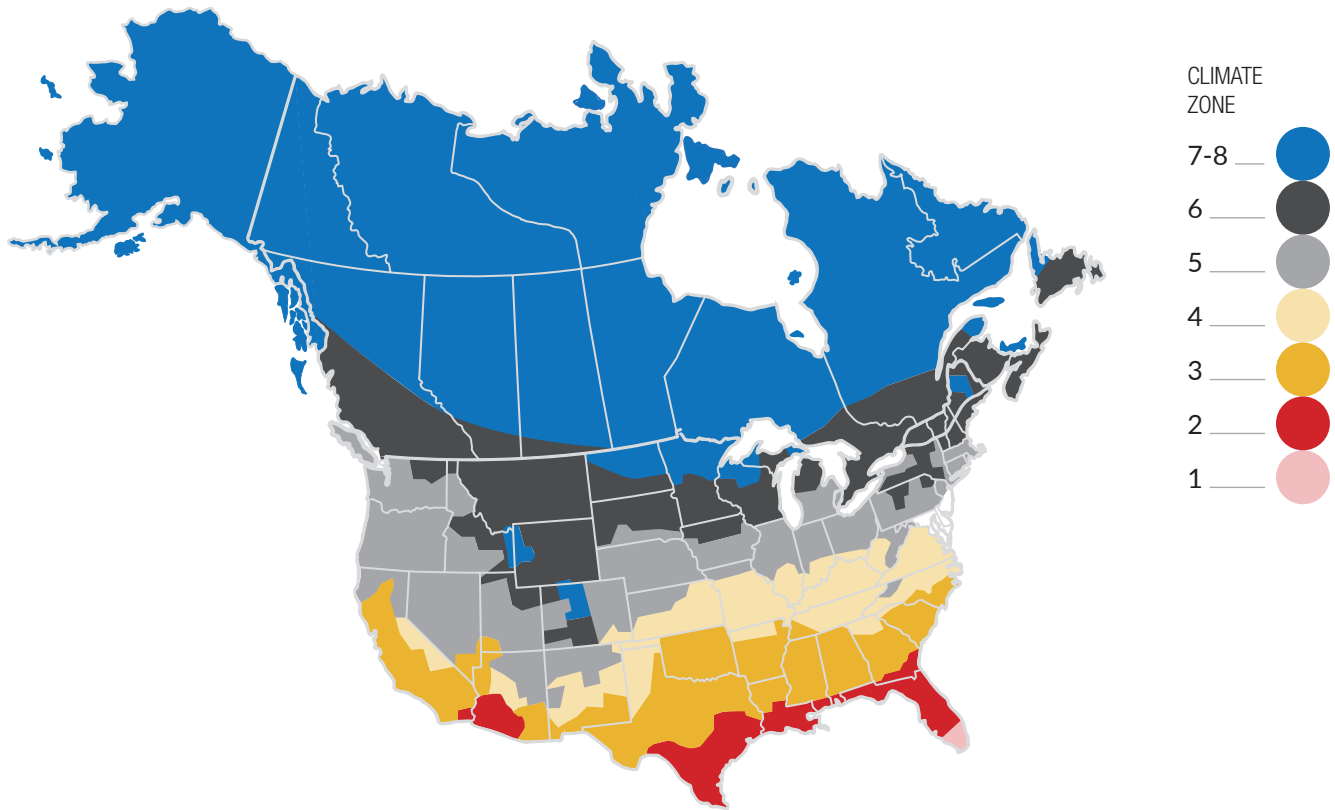
**EPA  
exempt**

Wood fireplaces (ME150) are designed for ambiance with the doors opened or closed. The combustion rate of this type of appliance is often very high and around 5 kg of wood per hour or more. These conventional fireplaces will provide warmth and an exceptional view of the fire, but are not designed to burn overnight.



# MAXIMUM RECOMMENDED HEATING AREA

IN SQUARE FEET BY CLIMATE ZONE



FIREPLACE MODELS	ZONE 1-2	ZONE 3	ZONE 4	ZONE 5	ZONE 6	ZONE 7-8
HE250R	3,000	2,800	2,600	2,400	2,200	1,800
HE275CF	3,000	2,800	2,600	2,400	2,200	1,800
HE325	3,300	3,100	2,900	2,700	2,500	2,100
HE350	3,600	3,400	3,200	3,000	2,800	2,400

WOOD STOVE MODELS	ZONE 1-2	ZONE 3	ZONE 4	ZONE 5	ZONE 6	ZONE 7-8
HES170	2,400	2,250	2,100	1,950	1,800	1,500
HES240	2,900	2,700	2,500	2,300	2,100	1,700

WOOD INSERT MODELS	ZONE 1-2	ZONE 3	ZONE 4	ZONE 5	ZONE 6	ZONE 7-8
HEI170	2,400	2,250	2,100	1,950	1,800	1,500
HEI240	2,900	2,700	2,500	2,300	2,100	1,700



**Our commitment** to quality manifests itself through the strength and quality of our products, which are covered by the best warranty in the industry.

Our full range of venting systems can be adapted to any type of installation and appliance.

Essential elements to complete your heater installation project, the solidity of the pipe and chimney will ensure the optimal performance of your stove or fireplace.



**CLASS-A**  
INSULATED CHIMNEY SYSTEM



**BLACK STOVE PIPE**  
DOUBLE AND SINGLE WALL



Stainless Steel Chimney Lining System



**NOW AVAILABLE THROUGH**  
**COPPERFIELD!**







**More efficient than ever, Ventis products represent a clean and sustainable alternative heating source, while providing the incomparable atmosphere of a wood fire.**

## COMBUSTION TECHNOLOGY

**All Ventis appliances are non-catalytic and easy to use. Certified to the highest environmental standards, our heaters are among the cleanest in the industry.**

## LIMITED LIFETIME WARRANTY

**Made in Canada, Ventis stoves and fireplaces represent performance and durability. Our limited lifetime warranty testifies to the robustness of our products and allows you to choose Ventis with confidence.**



**NOW AVAILABLE THROUGH  
COPPERFIELD!**

**[copperfield.com](http://copperfield.com)**



Printed in USA 2020-07

Some changes may have been made to the products or technical data after the publication of this brochure. Olympia Chimney reserves the right to modify its products without any obligation on its part.